



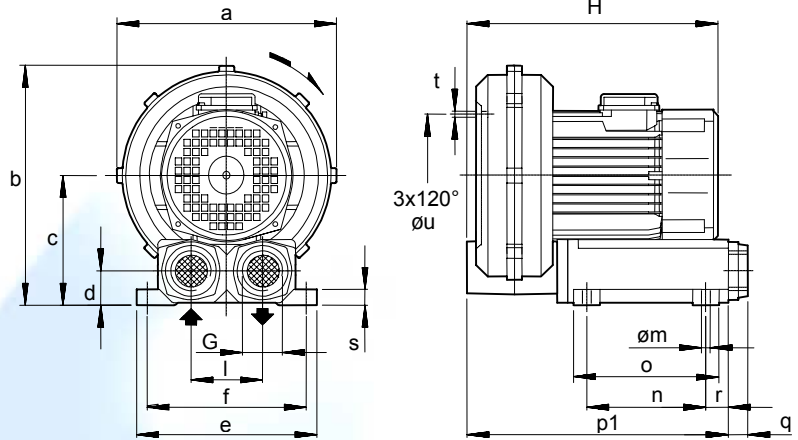
**CE Ex Group II Category 3G c T3 / 3D c T125°C**

**TECHNICAL CHARACTERISTICS**

- Unit in conformity to :  
ATEX 94/9/CE DIRECTIVE  
MACHINERY DIRECTIVE 98/37/CE
- Mountable in any plane
- E-motors thermally protected with Klixon
- Complete with metallic screen IP20, both in in/outlets ports

**OPTIONS**

- Special voltages (IEC 38)
- Surface treatments



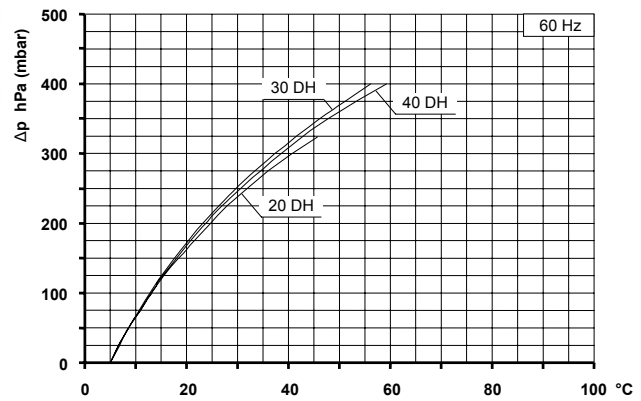
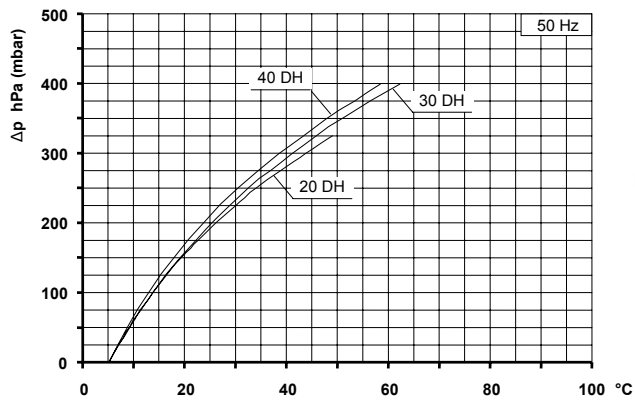
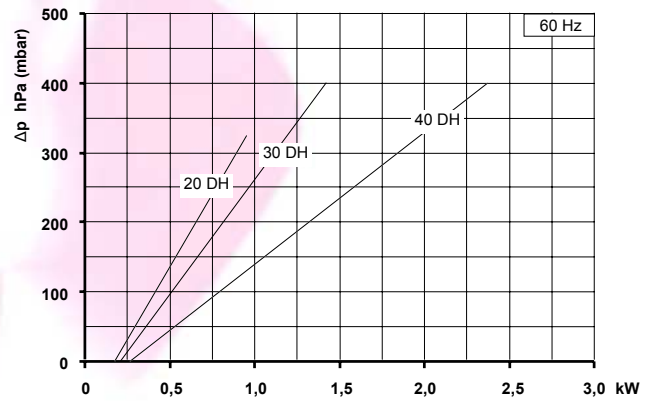
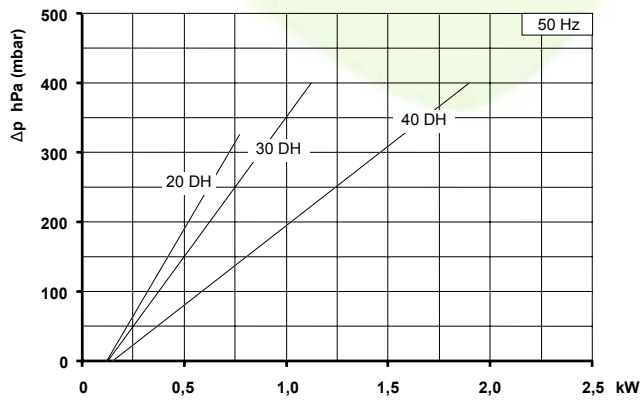
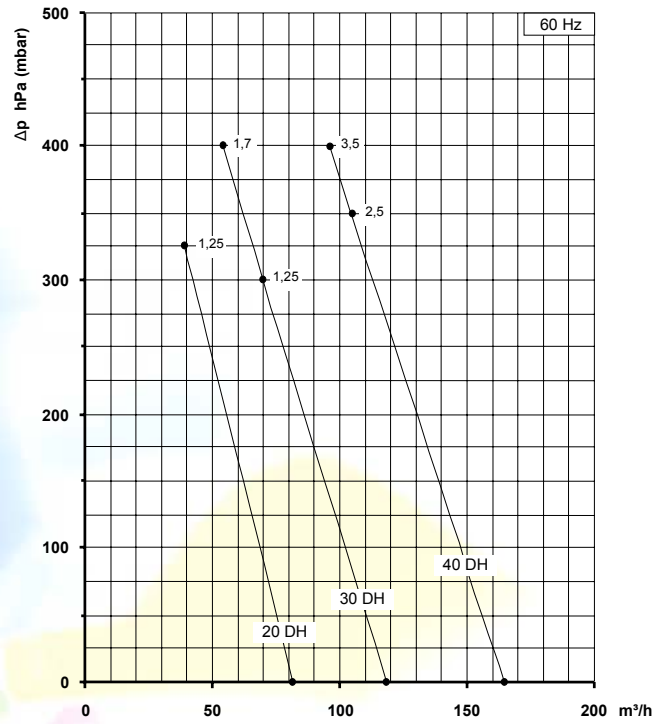
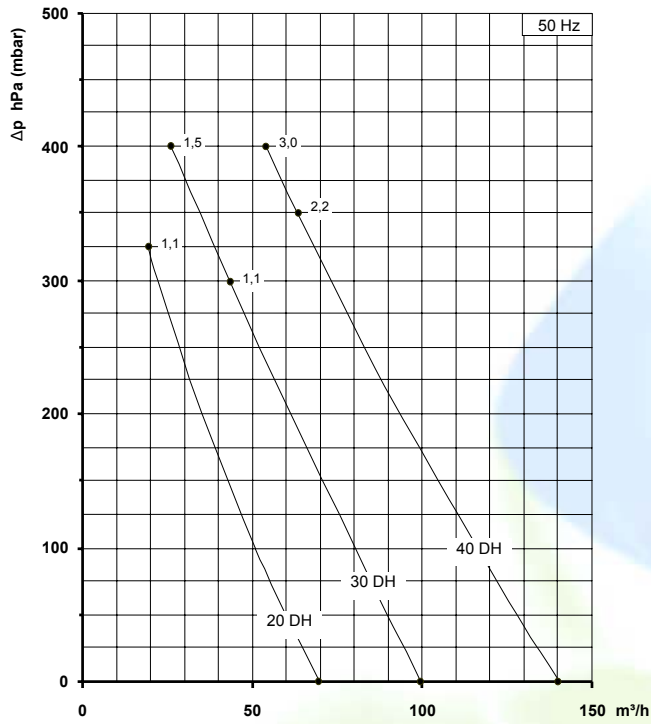
Dimensions in mm.  
 Dimensions for reference only.

Model	a	b	c	d	e	f	G	l	m	n	o	p1	q	r	s	t	u
20DH	290	310	165	45	230	210	G 1"1/4	90	10	150	195	355	18	45	20	M6	150
30DH	320	347	187	53	270	245	G 1"1/2	105	10	185	235	420	18	55	20	M6	180
40DH	350	370	195	53	270	245	G 1"1/2	105	10	185	235	440	18	55	20	M8	225

Model	Maximum flow m <sup>3</sup> /h		Installed power kW		Maximum differential pressure Δp hPa ( mbar )		Noise level Lp dB (A) (1)		Overall dimensions H mm	Weight Kg
	50 Hz 2900 rpm	60 Hz 3500 rpm	50 Hz 2900 rpm	60 Hz 3500 rpm	50 Hz 2900 rpm	60 Hz 3500 rpm	50 Hz 2900 rpm	60 Hz 3500 rpm		
20DH	70	82	1.1	1.25	325	325	65.0	68.0	352	22.0
30DH	100	118	1.1	1.25	300	300	67.7	69.7	360	24.0
			1.5	1.7	400	400	68.0	70.0	405	27.5
40DH	140	165	2.2	2.5	350	350	71.7	74.7	417	36.5
			3.0	3.5	400	400	72.0	75.0	444	37.5

(1) Noise measured at 1 m distance with inlet and outlet ports piped, in accordance to ISO 3744.

- For proper use, the blower should be equipped with inlet filter and safety valve; other accessories available on request.
- Admissible room temperature and suction temperature from -15°C to +40°C.
- Specifications subject to change without notice.



Curves refer to air at 20°C temperature and 1013 mbar (abs) atmospheric pressure measured at inlet port.  
 Values for flow, power consumption and temperature rise: +/-10% tolerance.  
 Data can change without prior notice.